



**PACESETTER  
HOMES**  
A QUALICO Company

# The Acadia

PLAN 51700

## Floor Plan Highlights

3



2



1



1,700



Base Sq. Ft.

Family Room | Primary Walk in Bathroom |  
Open Concept | Walk-In Closet

ELEVATION A



ELEVATION B



ELEVATION C



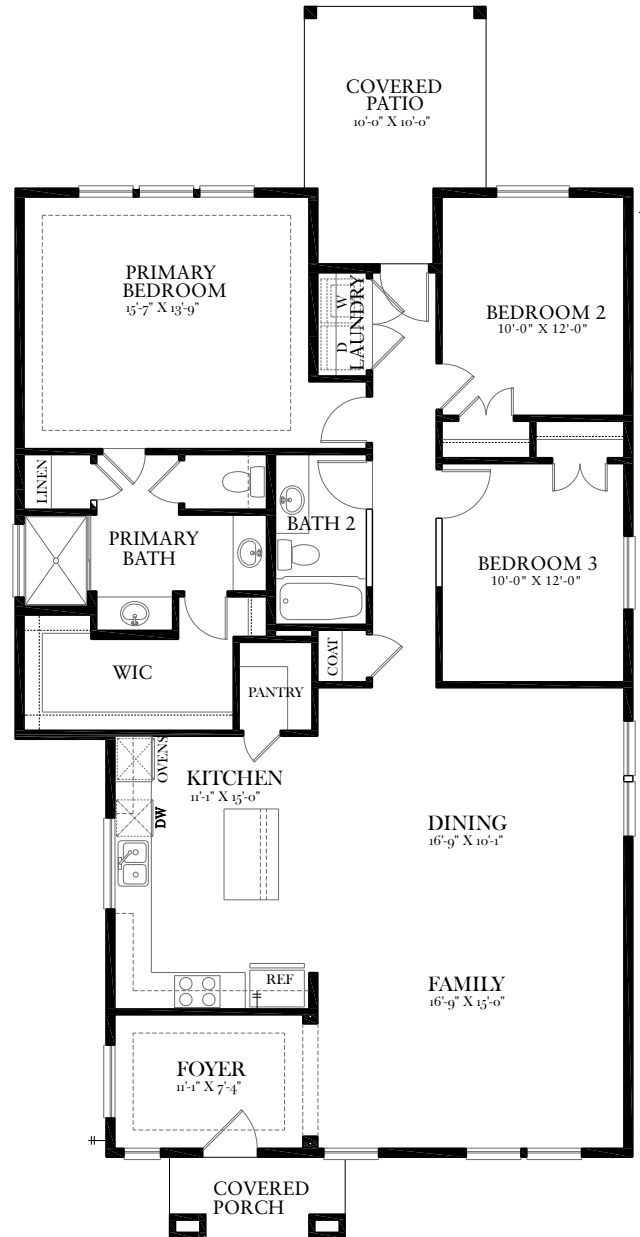


**PACESETTER  
HOMES**

A QUALICO Company

# The Acadia

PLAN 51700



Updated 12/2024. © Pacesetter Homes, LLC. Unauthorized use of this plan is a violation of the U.S. Copyright Act Title 17 of the U.S. Code. Floor plans and elevations are subject to change without notice. The floor plans and elevations represented are artistic representations. The actual construction plan may differ in features, dimensions, and colors offered. All square footage is approximate. Contact a Pacesetter Sales Representative for additional details and current specifications.